

Guide for participants

Table of Contents

Input form	1
List of results	2
Views of the list of results	3
Statuses of records in the list of results	3
Summary of the results	3

Input form

The form created in the *MS Forms* application is used for entering the results by the participants of the event. The form cannot be filled in anonymously. The user must authenticate with his/her university login credentials.

The results can be reported at <https://forms.office.com/e/XH37HN6sD4>.

QR code might be also used to access the form.



Figure 1. QR code

The form is bilingual. The default czech language might be switched to english.

You can switch the language in the upper right corner of the form.

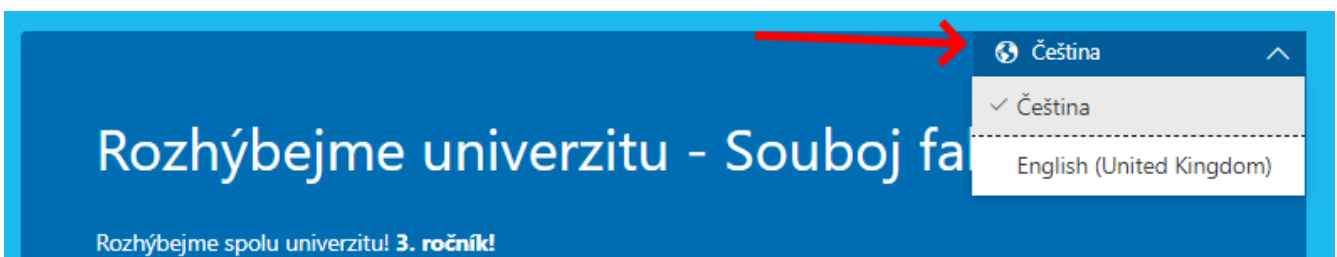


Figure 2. Switching the language

List of results

After filling in the form, the participant will receive a link where he/she can check his/her reported results as well as the status of their verification by the organizer.

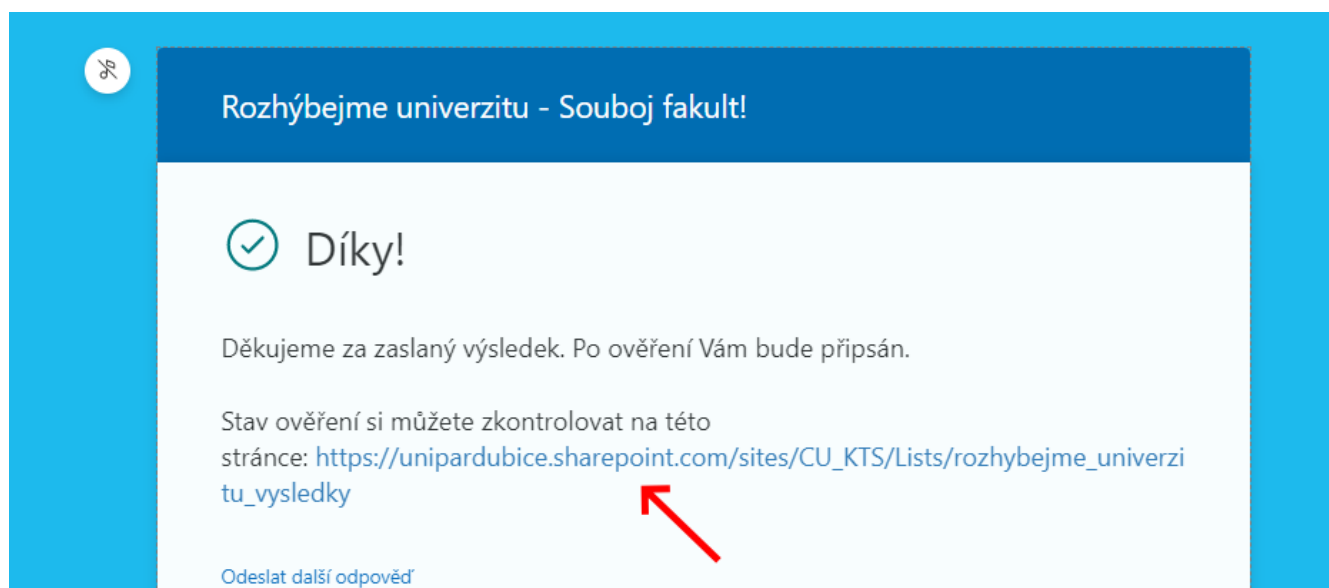


Figure 3. Link to the list of results

The participant can also bookmark the link to the results list in his/her browser and view the results at any time later.

Link: https://unipardubice.sharepoint.com/sites/CU_KTS/Lists/rozhybejme_univerzitu_2024_vysledky

Název	Stav zpracování	Datum aktivity	Aktivita	Výsledek	Osoba	Typ osoby	Útvar	Komentář orga...
(1) Aktivita: Jízda na kole (2)								
Výsledek #15	Potvrzený	08.02.2023	Jízda na kole	65,30	studentoits	Student	FEI	
Výsledek #3	Neuznaný	25.01.2023	Jízda na kole	1,20	studentoits	Student	FEI	Výsledek neuznán z důvodu ...
(2)								
(3)								
(4)								
(5)								
Aktivita: Souvislá aktivní chůze (3)								
Výsledek #14	Potvrzený	08.02.2023	Souvislá aktivní chůze	5,33	studentoits	Student	FEI	
Výsledek #10	Potvrzený	26.01.2023	Souvislá aktivní chůze	12,20	studentoits	Student	FEI	
Výsledek #4	Potvrzený	25.01.2023	Souvislá aktivní chůze	1,50	studentoits	Student	FEI	Výsledek upraven podle přiloženého printscreenu aplikace
Aktivita: Souvislý běh (1)								
Výsledek #9	Potvrzený	26.01.2023	Souvislý běh	13,30	studentoits	Student	FEI	

Figure 4. List of results

The records in the list are grouped by reported activity (point 1).

Each record is identified by the serial number of the activity (point 2). Click on the serial number shows the full detail of the record.

Each record may exist in a different state (point 3). Record states and their meaning are described below.

Each record contains the result (point 4). The result may be different from the value entered by the participant, e.g. due to rounding, correction by the organizer, etc.

In case of corrections or non-acceptance of the result, a comment from the organiser may be available (point 5).

Views of the list of results

By default, the list of result shows all reported results regardless their status. The participant can switch between two views of the results list.

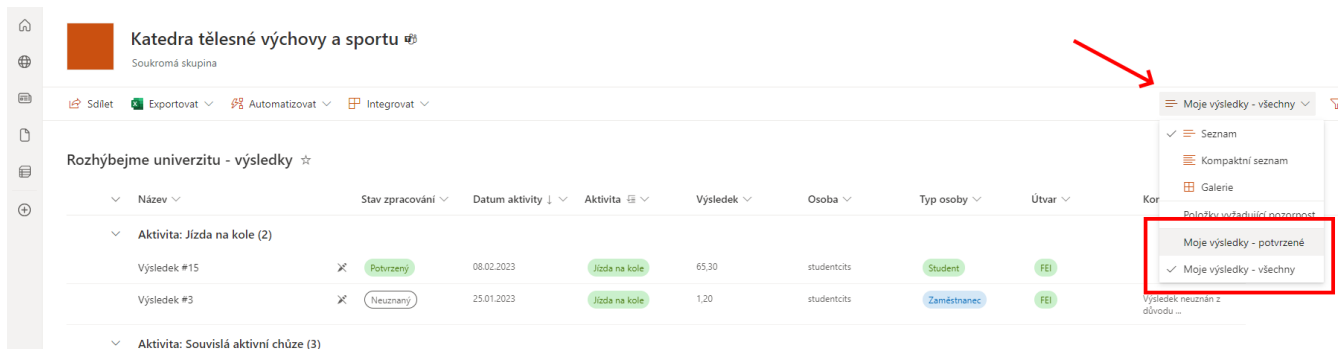


Figure 5. Switching the view of results

The *Moje výsledky - všechny* view (default view) provides an overview of all reported results and their status.

The *Moje výsledky - potvrzené* view shows only those results that have already been reviewed and approved by the administrator.

Statuses of records in the list of results

Each record in the results table can exist in on of three states.

- **Nový (New)**

A result in "Nový" state is a result that has been reported by a participant but has not yet been verified by an administrator.

- **Potvrzený (Approved)**

A result in "Potvrzený" state is a result that has been checked and accepted by the administrator. Only approved results are included in the evaluation.

- **Neuznaný (Rejected)**

A result in "Neuznaný" state is a result that an administrator has checked and for some reason has not recognized. The administrator can specify the reason for not accepting the result.

Summary of the results

A summary of the results can be found on

[https://app.powerbi.com/view?](https://app.powerbi.com/view?r=eyJrIjoiY2Q5ZGQ0NjYtMjFjFiOS00N2UzLTgyMTItYmJmNTY3MmY3ZmNhIiwidCI6IjQ5MzA3YzhkLWI3YmQtNDJkMS)

[r=eyJrIjoiY2Q5ZGQ0NjYtMjFjFiOS00N2UzLTgyMTItYmJmNTY3MmY3ZmNhIiwidCI6IjQ5MzA3YzhkLWI3YmQtNDJkMS](https://app.powerbi.com/view?r=eyJrIjoiY2Q5ZGQ0NjYtMjFjFiOS00N2UzLTgyMTItYmJmNTY3MmY3ZmNhIiwidCI6IjQ5MzA3YzhkLWI3YmQtNDJkMS)

The data displayed is anonymous. To see a summary of your results, you need to know the identifier of any of your own results. It is the number after the # symbol in the list of results.

Rozhýbejme univerzitu 2024 - výsledky ☆

Osoba: [Me] ×

Název	Stav zpracování	Datum aktivity	Aktivita	Výsledek
Aktivita: Souvislý běh (1)				
Výsledek #106	Nový	05.03.2024	Souvislý běh	2,30

Figure 6. Result ID

Selecting this number in the filter above the table will display information for all results for that person.

Rozhýbejme univerzitu 2024 - Individuální souhrn

ID některého z mých výsledků

106

Shrnutí uznaných výsledků

Aktivita	Můj výsledek	Moje pořadí	Výsledek té/toho přede mnou	Výsledek té/toho za mnou
Souvislá chůze	5,09	260	5,18	5,06
Souvislý běh	31,83	54	31,84	30,42

Figure 7. Aggregated information on results

At the bottom of the report, there is a switch between report pages. Switch to the first page to see a summary graphic of the competition.

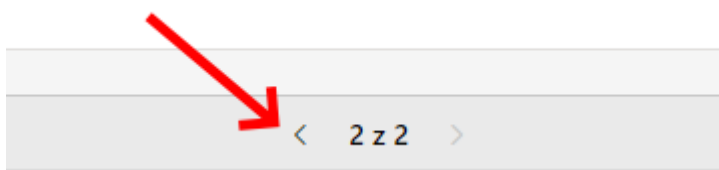
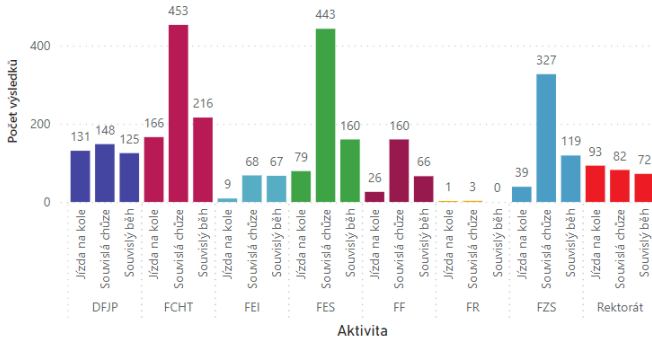


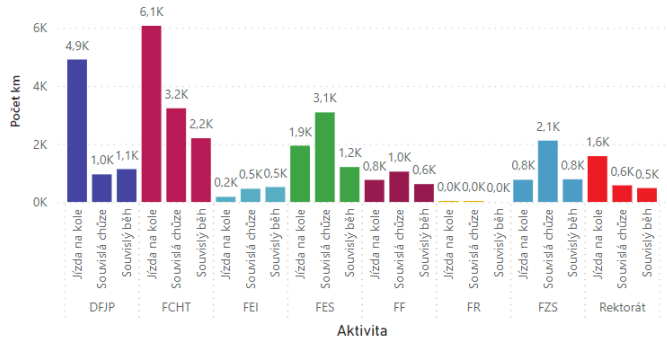
Figure 8. Switch to the first page

Rozhýbejme univerzitu 2024 - Grafický souhrn výsledků

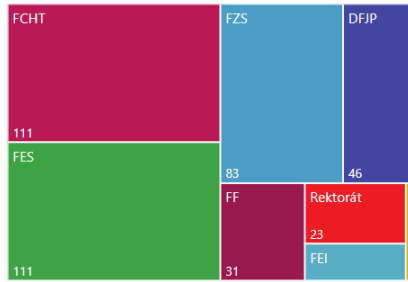
Počet výsledků



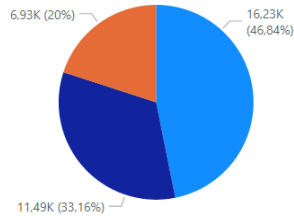
Počet km - celkem 34649.04 km



Počet zúčastněných osob - celkem 420



Počet km v jednotlivých aktivitách



Rozdělení aktivit podle počtu osob



Figure 9. Graphical progress report